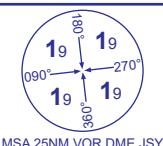


INSTRUMENT APPROACH CHART - ICAO

JERSEY
LOC/DME/VOR
RWY 26
(ACFT CAT A,B,C,D)



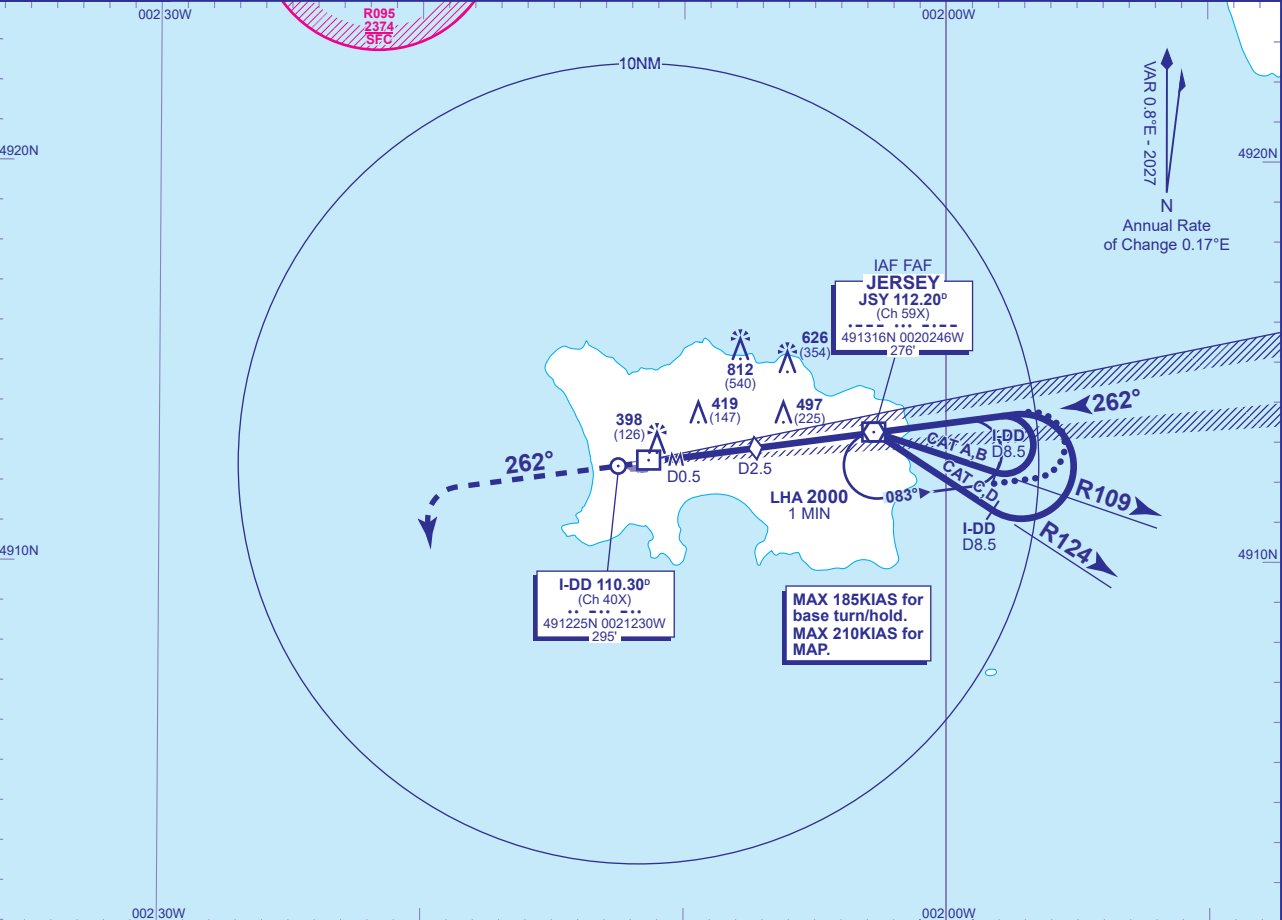
MSA 25NM VOR DME JSY

ATC	125.205, 120.450
APP	120.305, 118.555
TWR	119.455
	121.905
ATIS	134.680

JERSEY CONTROL
JERSEY APPROACH
JERSEY TOWER
JERSEY GROUND
JERSEY INFORMATION

AD ELEVATION	277
THR ELEVATION	272
OBSTACLE ELEVATION	812 AMSL (540) (ABOVE THR)
BEARINGS ARE MAGNETIC	

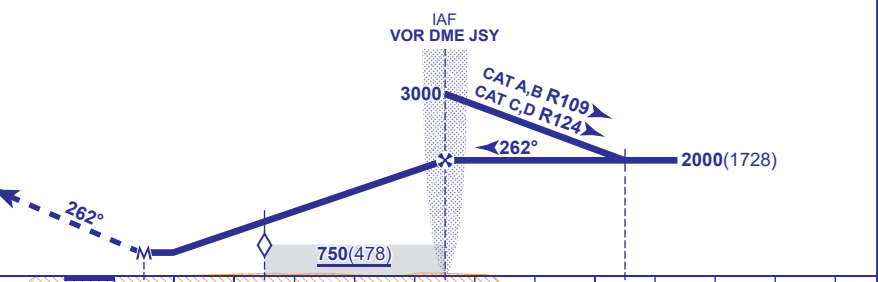
TRANSITION ALTITUDE	5000
---------------------	------



RECOMMENDED PROFILE Gradient 5.2%, 316FT/NM

DME I-DD	5	4	3	2.5 (SDF)	2	1
ALT(HGT)	1910(1638)	1590(1318)	1270(998)	1110(838)	960(688)	640(368)

MAPt I-DD D0.5
Climb straight ahead to **3000**, then turn left heading **180°M**, then as directed by ATC.
RCF: Proceed as above, and continue on heading **180°M**, 2 minutes after initiating missed approach, turn left direct to **VOR JSY** to join the hold at **3000**.



DME I-DD zero ranged to THR RWY 26

Aircraft Category		A	B	C	D	Rate of descent	G/S KT	160	140	120	100	80
OCA (OCH)	Procedure	620(348)	620(348)	620(348)	620(348)		FT/MIN	840	740	630	530	420
	Total Area	770(493)	770(493)	1210(933)	1210(933)							
VM(C)OCA (OCH AAL)	South of RWY 08/26	770(493)	770(493)	1030(753)	1030(753)							

ALTERNATIVE PROCEDURE EXTENDED HOLDING PATTERN (MAX 185KIAS)
Arrive at IAF VOR JSY at **3000**. Extend the outbound leg of the holding pattern descending to **2000(1728)**. At I-DD D9.5 turn left onto the LOC, when established, continue as for main procedure.

NOTE Localiser fluctuations may be experienced. See EGJJ AD 2.20 Local Traffic Regulations 6(d).

CHANGE (13/25): MAG VAR UPDATED. MAG HEADINGS.